

page 14, Section 2



OFFICE MANAGER Deb Wetherbee and ShareCare president Vina Mikesell from left unfurled this banner at the annual meeting of ShareCare of Leelanau last week. ShareCare volunteers have driven 162,682 miles and spent just over 19,000 hours helping fellow members stay in their homes longer.

ShareCare's success told through statistics

5/21/15

Twenty-two years of history — in the form of statistics — were shared with members at the annual luncheon meeting of ShareCare of Leelanau held last week at the Bluebird Restaurant in Leland.

ShareCare president Vina Mikesell and office manager Deb Wetherbee unveiled comprehensive statistics about the group and its efforts over the past two decades.

ShareCare members have racked up 162,682 miles as “drivers of the day” — equal to 6½ times around the Earth’s circumference.

In 2014, volunteers reported driving 10,472 miles while providing transportation to doctor’s appointments and other errands.

The number of hours devoted to volunteering the past 22 years was 19,079.

Last year, ShareCare volunteers recorded close to 700 hours helping members, providing any number of the following services: respite care, grocery shopping, light gardening, friendly visits, hot meal preparation and delivery, help with simple home repairs, help with spring and fall clean-up and transportation.

Further information about ShareCare is available at 256-0221.

Revolving door has ShareCare members helping, getting services

By Amy Hubbell
of the Enterprise staff

Pauline McClure doesn't need help often. But when she does, the 85-year-old Northport woman knows she doesn't have to look far.

She is one of more than 400 county residents who are members of ShareCare, a non-profit organization whose aim is to solve problems that can force older adults in Leelanau County to leave their homes.

McClure was in her mid-60s when she was became one of the first people to join the ShareCare, which incorporated in 1993 and became active the following year. The organization does not rely on government funds for

revenue, instead relying on dues to cover expenses and younger members to volunteer to provide many services.

"I was at a point in my life when I could do a lot of things. Initially, I didn't need any of the services," said McClure, who in 1988 became the first female president of the Northport Lions Club. "But I figured, I may not need it now... but I may need it in the future."

Members join based on a sliding fee scale with those under 60 getting the best rate and lower annual dues. The cost to join in 2010-2011 was \$200 for those in the youngest age group, with the amount split evenly between

(Concluded on Page 19)

ShareCare

Continued from Page 1

a one-time only enrollment fee and annual dues.

Those 85 and older paid the highest enrollment fee of \$1,400 and \$300 annually.

Membership costs are designed to encourage people to join the group before they actually need to use services — and while they are available to volunteer.

In exchange, some services the organization provides include

- A registered nurse who, at no additional charge, coordinates care for the member;
- Volunteer services such as free transportation to appointments, respite care, homemade or delivered meals;
- A list of service contractors who have been screened;
- Free, non-medical durable equipment such as bath seats, commodes, walkers and wheelchairs.

Suttons Bay's Anne Kelly, a registered nurse, has been care coordinator for ShareCare since April 2002.

"I think of myself as a red tape cutter, a professional daughter and a mid-wife at the other end of life," Kelly explained.

Through monitoring and periodic home visits, she develops care plans, assists with medication, offers post-hospitalization follow-up, and provides care-giver training as needed. Kelly develops relationships with members to understand their needs, and keeps children updated on their parent's status. In addition, she serves as an advocate for members, helping to keep medications and appointments straight.

"She connects the dots for people in the fractured health care system," ShareCare president Betsy Wilson said.

Volunteerism is a major component of ShareCare and is the reason the group is able to keep its staff to two people: Kelly and office coordinator Deb Wetherbee.

There are a list of 15 different volunteer jobs ShareCare members can sign up to provide for other members. They are "driver of the day," errand runner, board member, "friendly visitor," special events coordinator, companion, fall or spring cleanup crew, minor home repair, gardener, respite provider, hot meal provider, committee member, fundraising, and contributor of items for the ShareCare fair fundraiser.

McClure has volunteered to provide hot meals and drive ShareCare friends. She is a member of the board and a district captain.

She's also been on the receiving end of hot meals, visits from the nurse. But perhaps most importantly, she has made friends among her fellow ShareCare members.

"It's a tight-knit community," McClure said. "Really a fantastic organization."

When she retired to northern Michigan from the Lansing area, friends she left behind questioned how McClure would keep busy.

"There are any number of things you can do to stay active," the mother of six said.

ShareCare also organizes periodic social gatherings for its members. "This is an example of the vibrant community in which I live... I have a better support system up here than I would if I were living in Lansing.

"Knowing I have ShareCare gives my children peace of mind," McClure said.

Further information about ShareCare is available by calling 386-2273 or at www.sharecare.org.



ANNE KELLY, care coordinator for ShareCare, visits members periodically to monitor their status and develops care plan for them. She is pictured here with member Pauline McClure.

Many organizations offer help for seniors; here's partial list

The following is a list of senior-related groups that serve as resources to Leelanau County's older residents:

- Alzheimer's Association, Northwest Michigan Chapter — 929-3804, support group meets first Wednesday of each month at Tendercare in Suttons Bay, 2 p.m. www.alz.org/gmc.
- Area Agency on Aging — 947-8920 or www.aaanm.org.
- Grand Traverse Area Parkinson's Support Group — 922-4911 or www.gtaparkinsonsgroup.org, meets the fourth Wednesday of each month at the TC Senior Center, 10 a.m.

- Grand Traverse Bay Area Stroke Club — 935-6380, meets the second Wednesday of each month from 2:30-4:30 at Bethlehem Lutheran Church, 1050 Peninsula Dr., Traverse City.

- Leelanau Bereavement Support Group — 386-2273, meets Tuesdays from 9:30 to 11 a.m. at Suttons Bay Congregational Church, Madison and Lincoln Streets in Suttons Bay.

- Leelanau County Commission on Aging — 256-8121. Can also be found at www.leelanau.cc, under departments

- ShareCare of Leelanau — 386-2273 or www.sharecareleelanau.org.

ShareCare to move

ShareCare of Leelanau will have a new home in early 2012.

At its inception, office space for the group was offered at the former Leelanau Memorial Health Center. After the hospital closed, ShareCare was offered space from Northport Highlands.

Now the organization is moving to the Connie Binsfeld Resource Center in Lake Leelanau to be a little more centrally located. ShareCare members live throughout Leelanau County. As they would do at Northport Highlands, the group will pay rent to use the Binsfeld center.

In addition, the group is holding a membership drive offering new members 20 percent off the one-time enrollment fee.

Further information is available at 386-2273.

ShareCare of Leelanau celebrates 20th anniversary

By Kristine Morris
Contributing Writer

LEELANAU » This month, ShareCare™ of Leelanau is celebrating 20 years of service to county seniors. Based on the idea of “neighbors helping neighbors,” ShareCare of Leelanau, Inc. helps resolve one of the biggest fears of senior citizens: the thought that one day they might have to give up living independently.

The organization's goal is to keep older adults living in their own homes as long and as safely as possible. Many older adults find

that they need some degree of assistance to continue living on their own. Some will have health issues that require monitoring, and others may need help with routine household chores and maintenance.

Still others may no longer drive, and could use help with transportation to doctors and dentists, hair appointments or a shopping trip. For some, a visit from a friend may be all that's needed to brighten a lonely day. To date, ShareCare has helped more than 1,000 Leelanau County residents improve their quality of life.

ordinator, Anne Kelly, RN, BSN, is a registered nurse who performs in-home assessments, monitors the health of members and assists in family conferences. These services are free to ShareCare members.

A newsletter, the Connector, is published every month to keep members abreast of new information and events. The organization also provides its members free access to non-medical durable equipment including wheelchairs, bath seats and walkers, and maintains a registry of independent contractors and caregivers who have passed reference and background checks.

ShareCare also has a roster of member-volunteers

to increase, both in Leelanau County and nationwide, such services are expected to be in even greater demand. But ShareCare is more than a “service provider” - it's a unique community of neighbors helping neighbors, all dedicated to the mission of helping seniors stay in their own homes for as long as possible, according to Kelly.

The ShareCare office is located at 7401 E. Duck Lake Road #600, in Lake Leelanau. To learn more about membership and services, please visit <http://sharecareleelanau.org>, call office manager Debra Wetherbee at 231-256-0221 or send an email to info@sharecareleelanau.org.

The idea for ShareCare originated in 1990 with retired couples Bob and Barbara Coye, Virginia and Bob Willard, and others who had the foresight and initiative to take action on the issue even before the idea of “assisted living” went mainstream. The organization became a non-profit Michigan corporation with 501(c) (3) status in 1993.

By May, 1994, 400 people had signed up to be ShareCare members. Today, membership stands at 387, with members ranging in age from 52 to 101. Members pay dues and an enrollment fee, based on a sliding scale, and also may serve as volunteers as they are able.

Donations and fundraisers, like this month's anniversary celebration at The Homestead Resort, in Glen Arbor, also supply funding.

ShareCare is independently self-managed by a volunteer board of directors made up of Leelanau County residents from a wide range of professional backgrounds. The organization's care co-



PHOTO COURTESY DEBRA WETHERBEE

ShareCare of Leelanau Care Coordinator Anne Kelly, RN, BSN, looks at a member's foot after recent surgery. The photo was taken at a ShareCare annual meeting.

Sunday, May 25, 2014

GRAND TRAVERSE INSIDER / C3

OUTSTANDING SERVICE

ShareCare receives 'Village Light Award'

By Kristine Morris
Contributing Writer

LEELANAU » ShareCare, Leelanau County's "neighbors helping neighbors" organization that seeks to help senior citizens age in place with safety, security and dignity was recently honored by the Michigan Coalition of Villages at its first Midwest Village Symposium, "Create, Connect and Thrive," held in Lansing.

ShareCare was honored as the first village in Michigan - and the nation - and was presented with the Coalition's Village Light Award for Outstanding Service to Community.

The purpose of the conference was to highlight villages in Michigan and bring together established, new and forming village members from across the Midwest to share ideas

about how best to serve the aging population. Workshops, panels and speakers addressed a large variety of topics for the benefit of attendees from Michigan, Kansas, Illinois, Missouri and Ohio.

Staff from AARP, Presbyterian Villages and the Villages to Villages Network also participated.

Representing ShareCare of Leelanau, Inc., were: Vina Mikesell, president; Larry Coppard, vice president; Mary Tonneberger, former board member; Anne Kelly, RN Care Coordinator and Deb Wetherbee, office manager and volunteer coordinator.

Three of the local representatives gave presentations at the conference: Mikesell spoke on the history of ShareCare, the oldest village in Michigan; Coppard spoke on the topic of how to use evaluations

to determine effectiveness and Tonneberger talked about developing community partnerships.

ShareCare recently expanded its services to members to include "Groceries on Wheels" and "Discharge Drivers of the Day."

For more information, visit sharecareleelanau.org, call 231-256-0221 or email info@sharecareleelanau.org.

Representing ShareCare Leelanau at the Midwest Village Symposium of the Michigan Coalition of Villages were (from left): ShareCare Vice President Larry Coppard, Office Manager Deb Wetherbee, President Vina Mikesell, RN Care Coordinator Anne Kelly, and former Board member Mary Tonneberger.



COURTESY PHOTO

Thursday, January 20, 2000

THE LEELANAU ENTERPRISE

'True meaning'

To The Editor:

Before all the trimmings are stowed for another year and the joy of holiday activities fades into the bustle of the New Year, we want to thank a number of neighbors for their generous participation in efforts to bring a bit of Christmas cheer to some of our home-bound ShareCare of Leelanau members.

On a snowy December afternoon, ShareCare carolers and others from local church choirs sang songs of Christmas joy for 18 of our members. Carolers from the Suttons Bay Congregational Church and the Leland Community United Methodist Church were greeted by grateful smiles as they visited individual local homes and three Leelanau assisted-living facilities.

They and president Ray Heine delivered festive packages of "goodies" to each ShareCare member who was visited. In addition to beautiful Christmas cookies made by Lou Ristine and Elisabeth Heikel, two Suttons Bay merchants contributed items. Dave Hansen, of Hansen's Market, provided chocolate Santas, fresh clementines and other tasty treats, while Jim and Bobbie Eggert, owners of The Front Porch, supplied a little gift, a tree ornament and the pretty wrappings.

Many thanks to all of the singers and others who helped bring the true meaning of the Christmas Season to some of their ShareCare neighbors. Santa hopes the happy experience will become an annual ShareCare tradition.

Barb Coye

Lawrence Rd., Suttons Bay

Record Eagle 04/2015

the BIZ

IN BRIEF

From staff reports

Nomination deadlines are due May 8. Learn more at <http://bit.ly/1z0WhqU>.

ShareCare honored

TRAVERSE CITY — ShareCare of Leelanau, a nonprofit that helps seniors overcome problems that often force them to leave their homes prematurely, received the Village Light Award by the Michigan Coalition of Villages for its Outstanding Service to the Community.

community v their stories journeys tow careers. One member will to get his or started. Tick in advance c door, and ar foodfulfillar brite.com.

Condo manage

TRAVERSE ert Meisner known conc torney, will nar titled C

TRAVERSE CITY RECORD-EAGLE Sunday, April 26, 2015

aid members to achieve the highest quality of life and independence in their own homes for as long as possible.

The disabled, elderly and shut-ins are members who utilize these services.

The grocery service will allow members to get groceries without leaving the comfort of their homes.

Discharge driver, will aid a members who might not have families in the area to take them to the hospital or an extended care facility, this program offers a smooth discharge for the patient member.

For more information call 231-256-0221 or www.sharecareleelanau.org.

Sharecare launches new services

LEELANAU — ShareCare of Leelanau, Inc., has added two new programs, including a grocery on wheels and a discharge driver.

The two programs will

*Reader's Forum:***Once again, ShareCare comes through**

By Artie Lancaster

I read with interest the article about ShareCare and would like to share my own experiences with your readers.

I first learned of Share Care while building my retirement home in Northport. I had been told that one of my neighbors, like I, was a retired District Court Judge so I was eager to meet him. Each time I passed his house there were cars in his driveway and I hesitated to stop. Before my house was completed I learned of his death and the long illness that had preceded it. It was then I also learned that because of a non-profit volunteer organization called ShareCare he had been able to live out his life with dignity, well cared for in the comfort of his own home. After going to ShareCare's office, I joined.

Both as a board member and a regional co-captain, I have an insid-

er's view of the work it takes to make ShareCare the unique organization that it is — how truly unique I learned only recently.

Last summer, after surgery at Mayo, I arrived home to find both a walker and a wheelchair waiting for me along with something I didn't even know existed ... a toilet riser! In my refrigerator was a homemade casserole and dessert for that night's supper. Anne Kelley, our registered nurse, dropped in regularly to check on me. Food arrived in abundance. Deb Wetherbee, our office manager, called often to see how I was doing and what more I might need. When I had to take an early morning flight back to Mayo, the "driver of the day" got me to the airport with time to spare.

No doubt with all that spoiling it must have looked suspicious when

this summer found me back in bed, laid low with another problem. Once again ShareCare was there. Mail was picked up. Groceries and prescriptions were delivered. Winnie's dog door was opened and closed for her each day. Deb even found me a cleaning lady! Once again, I found Anne's visits infinitely more helpful than the pain pills.

This week, fortunately in an upright position, I filled in one day at the office for Deb, significantly more aware than ever that each hour we spend as volunteers comes back to us a hundred fold.

Finally, although your article stated that 300 persons had joined ShareCare, more than 800 members have been served in the 11 years since the organization was founded.

Artie Lancaster lives on North Shore Drive in Northport.

Senior citizens volunteer to help each other

Seminars are being held in October throughout Leelanau County by the organizers of ShareCare, a senior citizen "self-help" group with an idea that has great potential for older residents.

A private, non-profit corporation, the group is providing a safety net as residents grow older and need more and more help to remain independent. It's affiliated with Munson Health-care.

We like the idea that ShareCare has attempted to remain independent of federal funding, and was formed by a group of retirees living in Leelanau County who want to remain in their homes as they grow older.

In a sense, the network of seniors serves as an extended family, helping to accomplish some of the chores that children or grandchildren might otherwise complete. Family members are likely to live hours away from many county seniors who retired to live in former vacation homes.

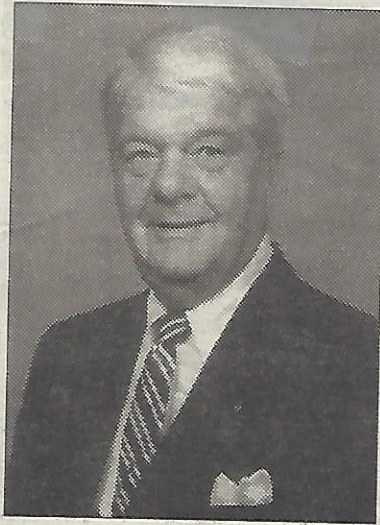
Members pay dues that vary from \$50 to free for those more than 85 years old. ShareCare volunteers donated 2,366 hours last year, driving 6,144 miles.

Future seminars will be held Monday at Trinity Church of the United Church of Christ in Northport, Oct. 19 at the Suttons Bay Congregational Church and Nov. 2 at the Leland Community United Methodist Church. Coffee and doughnuts will be served at 9:30 a.m. and seminars titled "recognizing a medical emergency" will follow at 10 a.m.

While the seminars will be informative, we suggested residents who are nearing an age where independence will become an issue attend to learn more about the organization itself.

Thursday, June 24, 1999

THE LEELANAU ENTERPRISE



RAY HEINE

ShareCare elects new president

"Outreach" will be the theme of the newly-elected president of ShareCare of Leelanau, Inc.

The Rev. Ray Heine was elected to the new post at the group's annual meeting held recently at the Leland Lodge. He replaces outgoing president Gordon Robertson, who reported that 45 new members had joined the group in the past year.

"I'm looking forward to this new undertaking because I know what a strong product ShareCare offers and what a fine team of board members and committee chairmen I have to work with," Heine said.

As a 40-year participant in the Leelanau community, the Rev. Heine is a member of the Bioethics Committee of Leelanau Memorial Health Center. Since retirement he has served at churches in Suttons Bay, Northport and Frankfort.

Rev. Heine received his Doctor of Divinity from Wittenberg University in Ohio and in 1980 was elected Bishop of the Michigan Synod of the Lutheran Church of America. He and his wife, Flora, have been members of ShareCare since its inception. He served as membership chairman last year.

Newly elected members of the Board of Directors are Hugh Brown of Leland, Roger Ehle and Ulrich Straus of Northport; Dorothy French of Glen Arbor and Bill Klein of Suttons Bay.

They replace founding directors Barbara Coye, Kalin Johnson, Robertson, John Watkins and Virginia Willard.

ShareCare provides access to professional, contractual and volunteer services for senior members wishing to remain in their own homes as long as possible.

Thursday, September 1, 1994

editor

'Outstanding'

To The Editor:

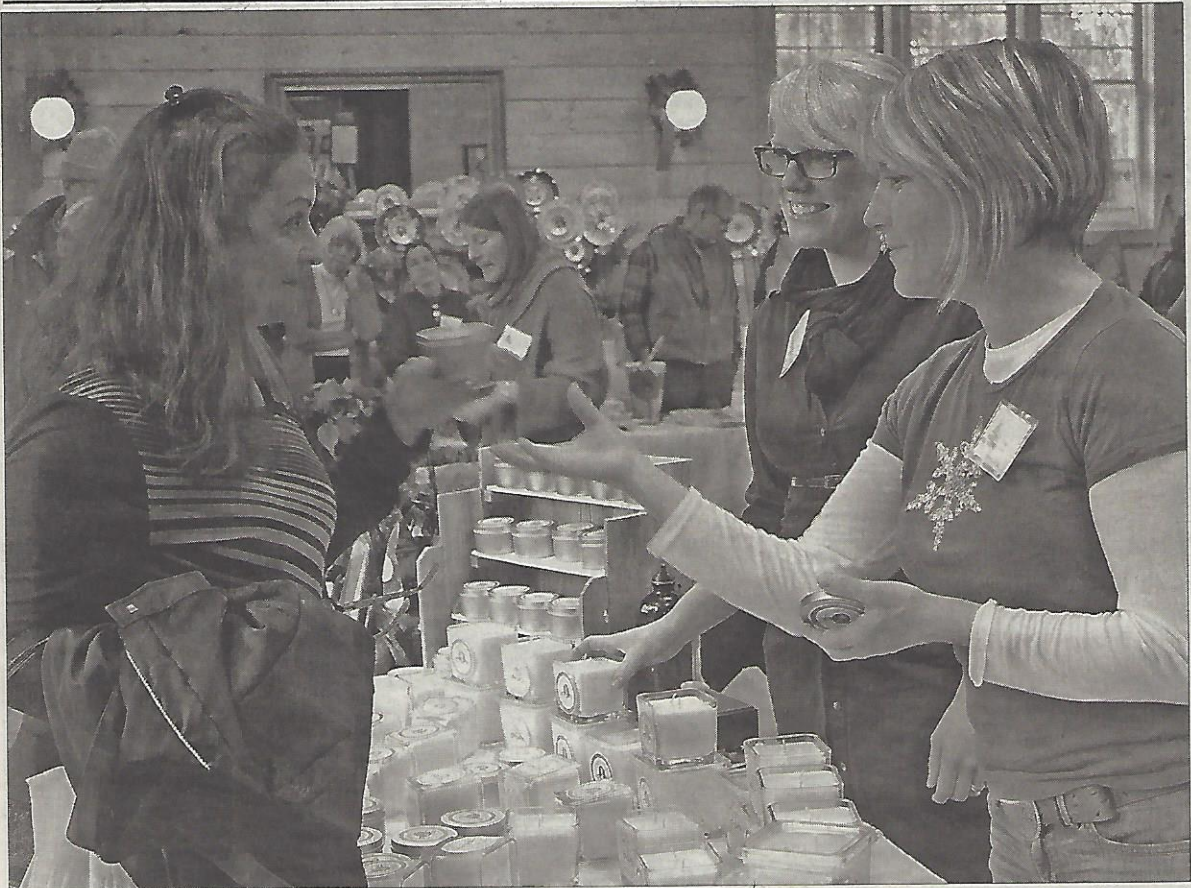
All of us know how special Leelanau County is because of its natural beauty. We often forget to look beneath the surface to the wonderful people and community that surround us.

There comes a time when each of us will want to call upon others for some kind of assistance. How fortunate we are to have been blessed with the presence of the ShareCare group in Leelanau County. Not only are they just a phone call away when needed, but they have become our trusted friends and neighbors.

We have been so delighted with their services and are grateful for the opportunity they provide for us to maintain our independent lifestyle here in Leelanau County.

Many thanks to Judy Walters, the Dunklows Lawncare Service, Jean Watkins and her enthusiastic volunteers for doing such an outstanding job.

Laura Wendel
Leland



CINDY MCMULLEN of Leland checks out the scents on display by Shawna Asher and Shari Prevost of the Leelanau Candle Company at the Merry Marketplace held Saturday at the Old Art Building in Leland.

Merry Marketplace draws usual crowds

Nineteen artists — all of them returnees from past years — sold their wares at the annual Merry Marketplace held Saturday at the Old Art Building in Leland.

And it was a successful event, said Linda Broughton, assistant director of the Leelanau Community Cultural Center, the group that hosted the event.

“They all said it was a great year,” she said. “Some of them said it was

their best.”

There are usually 20 to 22 vendors at the Marketplace, Broughton said, and people who attend the event each year have come to expect certain vendors to be there.

“It’s like they set aside the date to come and see their favorite artist,” she said.

None of the vendors were new this year.

But new event held next door at the

Leland Library, the 2013 Northern Michigan Author & Artist Expo, brought in some new faces this year, Broughton said. The Cultural Center worked with the library to coordinate the two events, she said.

“It was a good collaboration,” she said.

For those who enjoyed the cookies, Broughton gives all the credit to the artists, who baked them.

— By Patti Brandt

LAKE LEELANAU
resident Susan
Pandorf spent some
time shopping for
clothing for her
grandchildren at the
Kathy's Kids booth,
owned by Kathy
Dyk Powell of
Cedar.



NOTECARDS WERE on the list of Jennie Nestor, of Traverse City, who loves to shop for unique gifts at local bazaars and craft shows.

ShareCare offers more member services

ShareCare of Leelanau, Inc. is offering two new services to members.

The first is Groceries on Wheels, which allows members to get groceries without leaving the comfort

of their homes. Owners of stores in all corners of the county have signed on to participate and there are volunteers ready to grocery shop.

The second new service is Discharge Drivers of the Day. It's an enhanced version of the Driver of the Day service for members who may not have family in the area to take them home from a hospital or extended care facility.

The program helps provide a smooth discharge for patients, which in turn will hopefully decrease the incidence of re-admission.

ShareCare's mission is to allow its members to achieve the highest quality of life and independence in their own homes for as long as possible.

Membership is open to anyone who lives in Leelanau County. Fees are based on the age of the person when he or she joins. If more than one person living in a household joins, the fees are discounted.

Further information about ShareCare is available at 256-0221 or by visiting www.sharecareleelanau.org.

Thursday, May 11, 1995

THE LEELANAU ENTERPRISE

ShareCare gets \$23,600 grant

A \$23,600 grant to ShareCare of Leelanau, Inc., has been made by the W.K. Kellogg Foundation of Battle Creek.

The grant was presented to the organization at its annual meeting in Leland on Tuesday. The funds have been earmarked for salary expenses of the program's nurse and care manager over the next year, according to organization president Barbara Coye.

The ShareCare group was organized last year to provide in-home services to allow elderly residents to remain in their homes. The organization of more than 425 members provided over 1,000 hours of volunteer and member services in its first year. "As ShareCare grows we expect to become self-supporting, but at this point help from the Kellogg Foundation is most welcome," Mrs. Coye said.

Thursday, April 16, 2015

THE LEELANAU ENTERPRISE

THE LEELANAU ENTERPRISE

Thursday, February 19, 2004

Volunteers feted at Valentine dinner

Barbara Coye of Bingham Township was presented with ShareCare of Leelanau's prestigious Gordon Robertson award for distinguished service at the group's Valentine dinner last week at the Leelanau Country Inn.

Dr. John Cermak of Northport, president of ShareCare, presented the award.

Coye is a founding member who helped spearhead the organization, originated its newsletter, served as president of the Board of Directors and remains active in long-range planning. A moving tribute, taped at his home as a surprise by Gordon Robertson, was the highlight of the award ceremony.

Also honored at the dinner as kings and queens of hearts were four members who have reached the age of 90 during the past year: Jane Domke of Leland, Margaret Jones of Northport, Marie Rozsa of Elmwood township

and Dr. Panfilo DiLoreto of Omena. They received flowers and certificates of achievement.

Alloa Anderson, age 103, spoke for "senior" members of the group. She resides at Orchard Creek Assisted Living Center in Elmwood Township.

Volunteer of the Year honors went to George Basta of Leland and Ethel Wills from Northport.

Dr. Cermak announced that Judy Egeler of Leland is the president-elect for the coming year and will take office in May.

Jay Littell of Leland, ShareCare board member, performed with his musical quartet, The Clefcats. Board members Jackie Cole of Cedar and Sue Cady of Suttons Bay created table decorations. Maryellen Hadjisky of Leland was in charge of arrangements.

ShareCare of Leelanau was organized in 1993 to help members remain

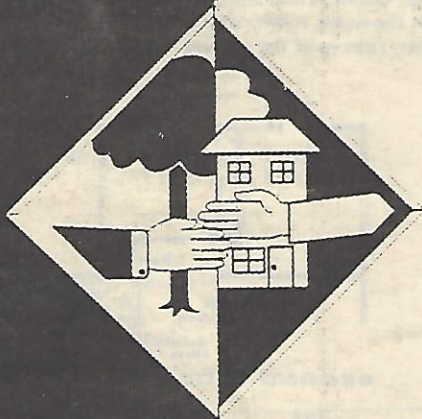


BARBARA COYE

in their homes as long as possible. Members volunteer to help other members with driving, meals, seasonal chores and friendly visit. Home care providers and a registered nurse are on the ShareCare staff.

Further information is available by calling 386-CARE (2273).

ShareCare of Leelanau, Inc.



ShareCare of Leelanau, Inc.
P.O. Box 615
Suttons Bay, Mich. 49682
386-CARE

INTRODUCING ShareCare

ShareCare is a newly formed private, non-profit organization. The board and members are Leelanau County residents. The purpose is to provide its members with a full range of "Assisted Living Services" at group rates. One phone call will give access to the services that will enable you to remain in your home and continue the independent lifestyle for the rest of your retirement. Learn about the Charter Membership of this exciting and unique program at the following public meetings.

PUBLIC MEETING SCHEDULE February, 1994

NORTHPORT

Tues., Feb. 8th, 7:00 p.m.
Trinity United Church of Christ
Thur., Feb. 10th, 3:00 p.m.
Township Hall

LELAND

Tues., Feb. 15th, 3:00 p.m.
Leland Comm. Methodist Church
Thur., Feb. 17th, 7:00 p.m.
Leland Public Library

GLEN ARBOR

Thur., Feb. 22nd, 7:00 p.m.
Town Hall
Thurs., Feb. 24th, 3:00 p.m.
Glen Lake Community Church

Cheers

■ To the late John Richter, an East Jordan veterinarian, environmentalist and a founder and president of the Friends of the Jordan River Watershed, who died May 28 of cancer at age 62. Friends recall Richter for bringing together community leaders and activists to win a number of important environmental victories. He successfully fought against injecting toxic leachate into an Alba well and also kept oil and gas drilling from the Jordan River Valley. The Northern Michigan Environmental Action Council named him an environmentalist of the year in 2008.

■ To the four finalists for National Cherry Queen for 2014, who were chosen from a field of 18. The coronation ball is set for July 11. The finalists are: Chelsea Lajko, a 2008 graduate of Kingsley High School; Alyssa Veliquette, a 2013 graduate of Elk Rapids High School; Stasha Yancho, a 2011 graduate of Traverse City West Senior High; and Elise Zagore, a 2013 graduate of Traverse City West Senior High.

■ To ShareCare of Leelanau, Inc., a membership organization that helps keep area senior citizens safely in their homes. The group, celebrating its 20th anniversary, offers members rides to the grocery store or hair appointments, respite care and loans medical equipment like wheelchairs.

to complete their high school education.

■ To Vice Adm. John Currier, who gave up the title of the U.S. Coast Guard's "Ancient Albacross" in a ceremony at the Traverse City air station. The Ancient Albacross is the Coast Guard's longest-tenured active duty aviation officer. He wears a leather jacket, cap, goggles and pilot's scarf as part of his office. Currier, who is retiring in Traverse City, passed the title to the 24th recipient, Rear Adm. Jake Korn.

■ To Kingsley High School valedictorian Becky Lint, whose valedictory address was a five-minute compilation of re-written songs from the chart-topping soundtrack of the Disney animated film "Frozen." She played the piano and sang to her 100 classmates and about 1,000 onlookers. She did renditions of the songs "Do You Want to Build a Snowman?" and "Let It Go." Lint plans to attend Western Michigan University to pursue a degree in music therapy.

■ To Irene Stuart, supervisor for Child Protective Services with Grand Traverse and Leelanau counties' Department of Human Services, who was awarded the 2014 National Association of Social Workers Michigan Chapter Lisa Putnam Award for Excellence in Child Welfare.

■ To the Traverse Area District Library, which rolled out its new

ShareCare shows off new digs in Lake Leelanau

Thursday, April 19, 2012

By Patti Brandt
Of The Enterprise staff

Several ShareCare of Leelanau Inc. members and community supporters were on hand Monday to help welcome the organization to its new home in Lake Leelanau.

Now in the Connie Binsfeld Resource Center at 7401 Duck Lake Road, the non-profit organization is more centrally located than it was in its former Northport home.

And more people have already been stopping by, said Deb Wetherbee, office manager.

ShareCare's goal is to keep people living in their homes independently and safely, said Anne Kelly, RN, care coordinator for the organization.

"People would rather stay at home than go to an extended care facility prematurely," Kelly said. "If there are just a few things they need to make that happen — a volunteer here and there, a ride here and there — we can do that."

Kelly visits all members who need services and also acts as a liaison between members and their families, especially when those families don't live in the area.

ShareCare, which is only open to residents of Leelanau County, has been around for nearly 20 years. Its 420 members pay annual fees that give them access to services such as a ride to a doctor appointment, help with simple chores, an occasional meal or just a friendly visit.

Wetherbee and Kelly are the organization's only employees; Most services are provided by a cadre of volunteers, many of whom are also members.

"One of the things that sets us apart from other organizations like this is that our members volunteer to do things for each other," Wetherbee said.

Like Tom Evans, who recently need-



STEVE PAIGE provides a little entertainment during an open house held Monday for ShareCare.

ed surgery to repair a broken hip and spent about six weeks in an extended care facility for rehabilitation. Now home, he gets regular visits to make sure he's getting around OK.

Evans and his wife, Jane, have been members of ShareCare for about 15 years, spending time volunteering as drivers.

"That's what it's all about," Evans said. "You volunteer to help others and when the time comes that you need help, others are there to help you. It was a nice resource for us."

But ShareCare also maintains a list of caregivers to recommend to members who need professional help, whether that's for two hours or around the clock. Caregivers, who are independent contractors paid for by the member, have been interviewed and had background and references checked by ShareCare.

"We're the matchmakers," Wetherbee said.

IE LEELANAU ENTERPRISE

Section 2, Page 11



ANNE KELLY, care coordinator for ShareCare of Leelanau Inc., from left, Tom Evans, a ShareCare member and Deb Wetherbee, office manager, enjoy a visit during an open house held Monday to show off the non-profit organization's new digs at the Connie Binsfeld Resource Center in Lake Leelanau.

BODY & SOUL

Saturday, October 18, 2014

features@record-eag

"We're one of the oldest and are so well established that people come to us to ask how to start their own villages."

Debra Wetherbee



Record-Eagle/Allison Batdorff

Margaret Skeba, left, and Nancy Hunter's friendship formed through ShareCare of Leelanau County, as both are members.

SHARING TIME

ShareCare helps support seniors that stay home

BY ALLISON BATDORFF
abatdorff@record-eagle.com

Margaret Skeba and Nancy Hunter scooch their seats closer, leaning into each other with affection and swatting arms with delighted caws when comments get saucy — which happens a lot.

“Can you see why I love her?” Hunter’s gesture encompasses Skeba’s slight, sweated frame. “She is one special lady.”

Hunter is 75. Skeba is 90. Their matchmaker is ShareCare of Leelanau County, Inc. Both women are members of the “aging in place” forerunner, which celebrated its 20th anniversary this year. The agency is based on the “neighbors helping neighbors” or “village” model where regional co-captains help members with meals after an injury, drive to appointments,

receive friendly visits, complete the yardwork and get the routine medical care and equipment that allow seniors to stay in their homes. ShareCare also employs a full time nurse to check in on members, and keeps a list of qualified independent contractor caretakers for more serious health problems.

Skeba, a charter member of the group, is part of a longstanding Leelanau family and can’t imagine living anywhere else but in her little home near the lake, she said. “It’s where my grandkids come to see me. It’s where they swim in the summer time,” Skeba said. “The other night I watched the sun on the lake, with the trees and the colors ... it was just beautiful.”

The aging in place movement

SEE SHARE PAGE 2C



Special to the Record-Eagle

Margaret Skeba directs Bob Olson and George Wills in a clean up operation at her home. Skeba turned 90 this year and is “aging in place” as a ShareCare member.

SHARE

FROM PAGE 1C

is steadily gathering steam, as the senior argument against displacement is bolstered by studies citing residential nursing homes cost five times as much as village communities. ShareCare beat the pack in 1993 when a group of local retirees founded an organization to overcome the problems that force seniors to leave their homes prematurely, said Debra Wetherbee, ShareCare's office manager and volunteer coordinator.

"We're one of the oldest and are so well established that people come to us to ask how to start their own villages," Wetherbee said. "We're all grown up — we're not in our infancy anymore."

ShareCare offsets costs with membership fees and annual dues that vary by age, from \$100 (under 60 years old) to \$1,400 (over 85), providing an incentive to joining early to freeze a cheaper rate. It's a bit like buying "an insurance policy," Wetherbee said.

"A lot of folks join thinking they won't need much but then someone falls down the stairs and needs services next week," Wetherbee said. "You unfortunately never know."

Volunteer duties — ranging from yard work to answering ShareCare's phone — aren't required.

"It's not a timeshare. You join, you get services. If you can volunteer, great," Wetherbee said, adding that the agency currently numbers about 400 members, and 70-75 of them volunteer.

Hunter joined strictly to volunteer but when she broke her ankle on the golf course, ShareCare provided her with a shower chair and scooter to make life easier, she said.

"That's the beauty of ShareCare ... at my age I hope I don't need their services, but they're there if I do," Hunter said.

Skeba and Hunter may be aging in place but their friendship moves at a good clip — down the road, as Hunter drives Skeba to her doctor appointments in Traverse

City — and at the mouth. Their chats in the car — "Nancy doesn't have time to text, we're talking too much" — evolved into tacking a meal or coffee outing onto the doctor visits.

"Yackety yack — that's all we do," said Skeba, patting Hunter affectionately. "I just love her, really and truly. She's absolutely precious to me."